

- 1** Tilt the machine back in a safe manor where you can gain access to the Planetary Heads.



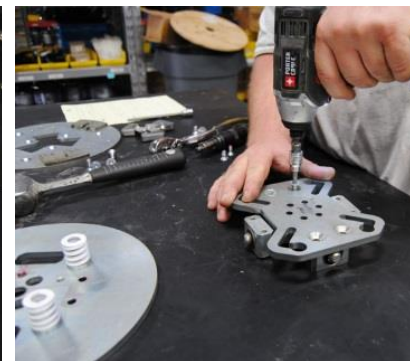
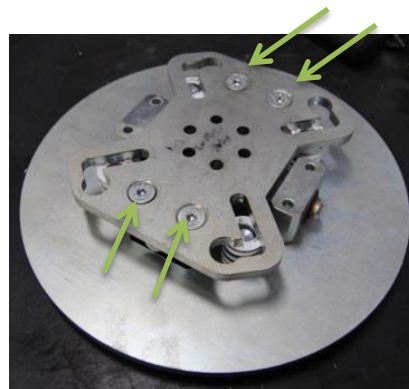
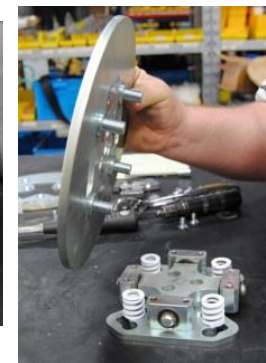
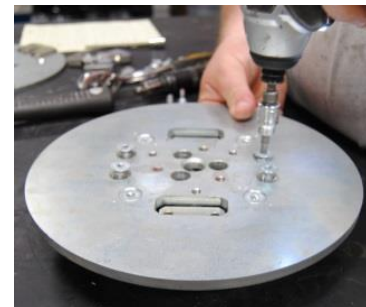
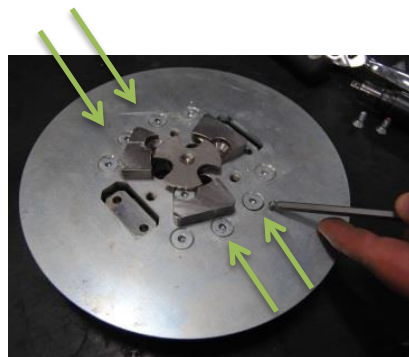
- 2** The Planetary heads are attached to the Planetary axels with 3 screws. Twist the spin locks to expose the 3 access holes. Use a long 6MM allen wrench to remove these 3 screws.



- 3** With the heads removed from the drum, it may be necessary to wipe down and clean before starting the rebuild.

- 4** With the head on a stable work surface, remove the 4 M8x20 screws on the driven plate with a 5 MM allen wrench. Then turn the head over and remove the other 4 M8x20 screws on the driving plate.

**It may be necessary to remove the twist lock.*



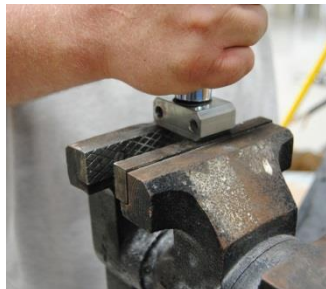


PLANETARY HEAD REBUILD

5 Remove the 4 suspension yokes from the center element.



6 Next drive out the yoke bushings and replace with the new bushings.



7 Replace the 4 suspension yokes back on the centering element paying careful attention to the direction of the yoke blocks.



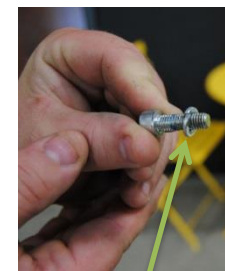
The yoke block can only be installed in one direction with the **thinnest side toward the surface to which it will be mounted.*



8 Reverse the disassembly process and re-install the Planetary heads back on the axels.

**Pay attention that the 3 holes in the center element align with the 3 holes in the driver plate.*

** Apply a light amount of **RED** thread locker to all the screws that you removed on the Planetary head. Insure the split lock washer is on the 3 screws that hold the heads to the axles and also apply a light amount of **BLUE** thread locker to these 3 screws as well.*



split lock washer

